



|                |  |              |
|----------------|--|--------------|
| LOCATION       |  | DATE         |
| PREPARED BY    |  | QUANTITY     |
| COMMENTS       |  | FIXTURE TYPE |
| CATALOG NUMBER |  |              |

## LED Undercabinet T5L2 Series

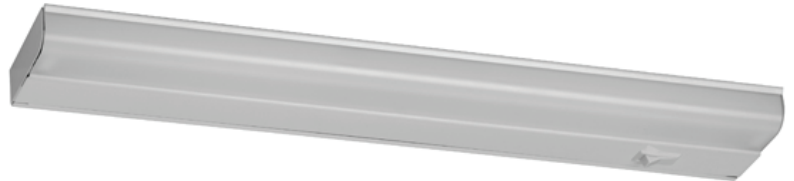
### Features

All purpose direct wire LED undercabinet light. Low profile applications include kitchens, study areas, displays and computer stations. Standard knockouts are located on top, back and ends for direct connection. A direct wire UL listed connector is included for use with 3/8" flexible conduit or 3-wire Romex.



### Construction

Housing is die-formed of 22-gauge steel. Separate hinge service tray allows for easy installation and snaps into position without hardware. Power supply connections must be made inside the fixture.



### Finish

All exposed metal parts are post painted lighting grade white or oil-rubbed bronze paint.

### Diffuser

Smooth white acrylic diffuser snap-fits into housing.

### Electrical

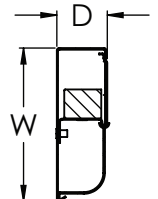
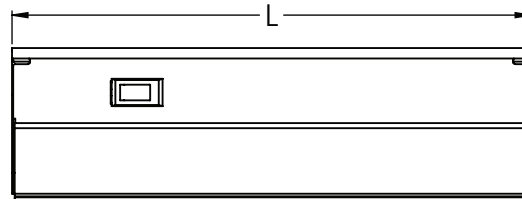
Input 120 VAC/60 Hz.  
Compatible with TRIAC and ELV dimmers.  
On/off switch included.

### LED

Integrated LED in 3000K color temperature.  
Rated 50,000 hrs., 90 CRI.

### Certification

Fixtures are cETLus listed for indoor damp locations.  
ENERGY STAR® Qualified.  
T24-JA8 compliant.



### Warranty

Limited warranty: This fixture is free from defects in materials and workmanship for a period of 5 years from date-of-purchase.

**Specifications and dimensions  
subject to change without notice.**

## Ordering Information:

| Size   | White      | Oil-Rubbed Bronze | Type            | Lumens | L   | W      | D      |
|--------|------------|-------------------|-----------------|--------|-----|--------|--------|
| 9 in.  | T5L2-9RWH  |                   | 4.5W SMT-Array  | 260    | 9"  | 3-1/2" | 1-1/8" |
| 12 in. | T5L2-12RWH | T5L2-12RRB        | 4.5W SMT-Array  | 270    | 12" | 3-1/2" | 1-1/8" |
| 18 in. | T5L2-18RWH | T5L2-18RRB        | 9W SMT-Array    | 520    | 18" | 3-1/2" | 1-1/8" |
| 21 in. | T5L2-21RWH | T5L2-21RRB        | 9W SMT-Array    | 530    | 21" | 3-1/2" | 1-1/8" |
| 24 in. | T5L2-24RWH | T5L2-24RRB        | 9W SMT-Array    | 540    | 24" | 3-1/2" | 1-1/8" |
| 33 in. | T5L2-33RWH | T5L2-33RRB        | 13.5W SMT-Array | 810    | 33" | 3-1/2" | 1-1/8" |
| 42 in. | T5L2-42RWH | T5L2-42RRB        | 18W SMT-Array   | 1080   | 42" | 3-1/2" | 1-1/8" |