

Assembly Instruction Sheet #IS-8001P32C

For Style 8001P32C

Tools Required: Flathead screwdriver, Phillips screwdriver, pliers, wire cutters, wire strippers, electrical tape, safety glasses.

Light Source: (19) Candelabra Base Bulbs 60W Maximum.

Estimated Assembly Time: 20-30 minutes

Preparation: Identify and inspect all parts before beginning installation. Check package content list and diagrams below to be sure all parts are present. If any parts are missing or damaged, do not attempt to assemble, install, or operate the fixture. Contact customer service for replacement parts.

⚠ Warnings and Cautions

Turn off electricity at circuit breaker or main fuse box before installation. Consult a licensed electrician if in doubt.

These instructions are provided for your safety. It is very important you read them completely before installing the fixture.

We strongly recommend that a licensed, professional electrician perform the installation.

Disconnect fixture from power source before replacing bulbs. Make sure bulbs are given sufficient time to cool before removal.

STEP 1 - Install top and bottom tier together.

A. Pass supply wire and ground wire through the junction box and fixture loop. Use supplied wire nuts to make all wire connections (Refer to WIRE CONNECTIONS IN JUNCTION BOX). Twist connectors until wires are tightly joined together. Wrap each connection with approved electrical tape.

B. Place the junction box onto the hex coupling and secure with the fixture loop. Hand tighten until snug.

C. Carefully stuff all the connected wires into junction box. Place the plate onto the bottom of the junction box and secure by threading the coupling onto the hex coupling. Hand tighten until snug.

D. Thread the center rod onto the coupling and thread the bottom tier onto the center rod. Hand tighten until snug to secure them together.

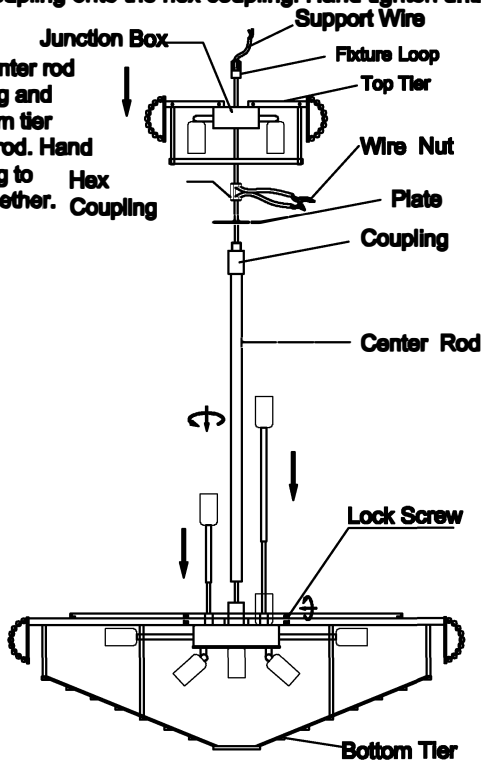
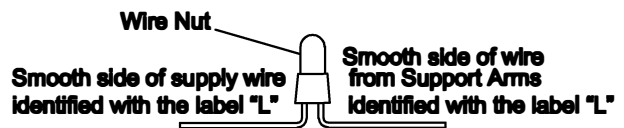


Figure 1

WIRE CONNECTIONS IN JUNCTION BOX

(Step 1 Continued)



WIRE CONNECTIONS IN JUNCTION BOX

STEP 2 - Install the Crossbar to the Ceiling

A. Attach the round crossbar to the outlet box and secure the outlet box screws by hand tighten. Place the crossbar with hook to the ceiling and make (4) marks from the holes of the crossbar on the ceiling for anchors. Remove the crossbar and drill proper holes from the (4) marks for anchors. Insert anchors into drilled holes properly. Place crossbar, flat washers and spring washers onto the anchors and secure with hex nuts. Hand tighten until snug with plier.

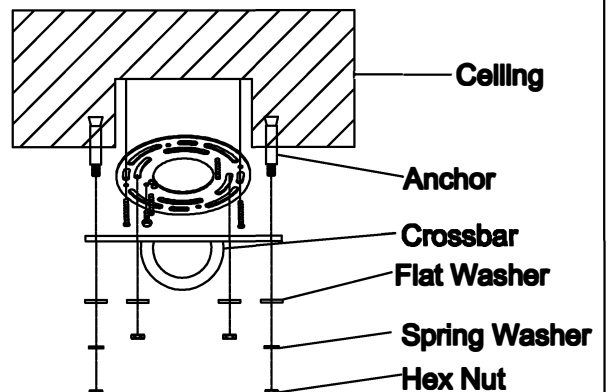


Figure 2