

# Dalwood™ 1 Light Wall Sconce Classic Pewter

45926CLP (Classic Pewter)

Project Name: \_\_\_\_\_  
 Location: \_\_\_\_\_  
 Type: \_\_\_\_\_  
 Qty: \_\_\_\_\_  
 Comments: \_\_\_\_\_



## Certifications/Qualifications

|  |      |
|--|------|
| Location Rating  | Damp |
| <a href="http://www.kichler.com/warranty">www.kichler.com/warranty</a> |      |

## Dimensions

|   |             |
|---|-------------|
| Base Backplate                                  | 5.00 X 6.50 |
| Extension                                       | 5.75"       |
| Weight  | 3.10 LBS    |
| Height from center of Wall opening (Spec Sheet) | 4.25"       |
| Height  | 8.25"       |
| Width   | 5.50"       |

## Mounting/Installation

|                          |          |
|--------------------------|----------|
| Install Glass Up or Down | Yes      |
| Interior/Exterior        | Interior |
| Mounting Weight          | 2.50 LBS |

## Primary Lamping

|                        |              |
|------------------------|--------------|
| Lamp Included          | Not Included |
| Lamp Type              | A19          |
| Light Source           | Incandescent |
| Max or Nominal Watt    | 75W          |
| # of Bulbs/LED Modules | 1            |
| Socket Type            | Medium       |
| Socket Wire            | 150          |

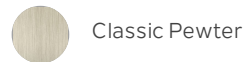
## Product/Ordering Information

|        |                 |
|--------|-----------------|
| SKU    | 45926CLP        |
| Finish | Pewter          |
| Style  | Lodge / Country |
| UPC    | 783927540568    |

## Specifications

|                      |              |
|----------------------|--------------|
| Diffuser Description | Clear Seeded |
| Material             | STEEL        |

## Additional Finishes



### Kichler

7711 East Pleasant Valley Road Cleveland, Ohio 44131-8010  
 Toll free: 866.558.5706 or kichler.com

### Notes:

- 1) Information provided is subject to change without notice. All values are design or typical values when measured under laboratory conditions.
- 2) Incandescent Equivalent: The incandescent equivalent as presented is an approximate number and is for reference only.

**KICHLER®**